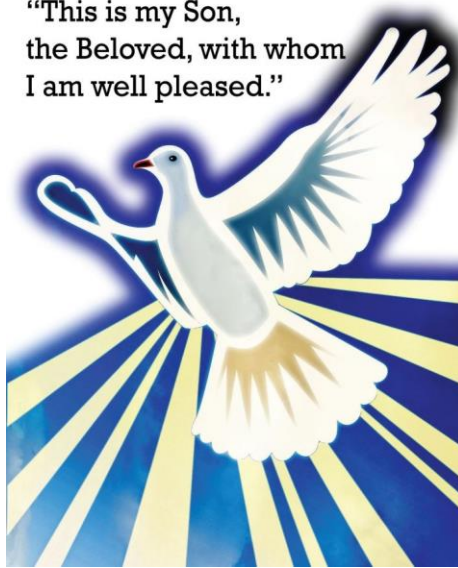


Edgecomb Community Church

United Church of Christ

15 Cross Point Road, P.O. Box 113, Edgecomb, ME 04556 Phone: 207.882.4060
Email: edgecomb.church@gmail.com FB/EdgecombCongochurch

“This is my Son,
the Beloved, with whom
I am well pleased.”



First Sunday after Epiphany, January 12, 2020

Scripture: Matthew 3:13-17

Sermon: Beloved

- Fri. Jan. 10 ECC's Annual Committee Reports Due – Please email your report to Jeff Grigg. Jeff's email is jgrigg1956@comcast.net
- Sun. Jan. 12 First Sunday after Epiphany - Worship at 9:30 a.m.
The Ecclesiastical Council of Brian Donovan at the Congregation Church of Boothbay Harbor at 3:30 p.m.
- Tues. Jan. 14 **Edgecomb Community Lunch** at 12 Noon
- Weds. Jan. 15 **Busy Hands** meets at 1:00 p.m.
Celtic Prayer Service at 5:30 p.m.
- Sun. Jan. 19 Second Sunday after Epiphany - Worship at 9:30 a.m.
- Tues. Jan. 21 **Edgecomb Community Lunch** at 12 Noon
- Sun. Jan. 26 Sunday Morning **Celtic Prayer Service at 9:30 a.m.** The morning begins by sharing breakfast together in Fellowship Hall at 9:30 a.m. followed by the Celtic Prayer Service.
*****ECC's Annual Meeting** will follow immediately the prayer service.
- Tues. Jan. 28 **Edgecomb Community Lunch** at 12 Noon
- Sun. Feb. 2 Fourth Sunday after Epiphany, Candlemas – Worship at 9:30 a.m.

*****Bible Study is held on Thursday's beginning at 10:30 a.m.** All are welcome to come at any time. Bring a brown paper bag to have lunch after the study.

Edgecomb Community Lunch is held on the 2nd, 3rd, 4th Tuesdays of the month at 12 Noon at Edgecomb Community Church, UCC. All are welcome.

*****Notice: The Thrift shop will closed and will re-open on Saturday, January 18th at 9:00 a.m.** The Edgecomb Community Thrift shop regular hours are Tuesdays, 9:00 a.m. to 1:00 p.m., Thursdays, 1:00 to 4:00 p.m. and Saturdays, 9:00 to 12 Noon.

In the Midst of Winter

Lord: In the midst of Winter,
when the days are cold and wind can pierce
remind us of the warmth of your love.

In the midst of Winter,
when days are short,
dawn comes late, and dusk arrives early
remind us that in the darkness your light still shines.

In the midst of Winter,
when the flowers of spring
still lie hidden in the earth,
when leaves are off the trees,
and the world can seem bleak
remind us that Easter is but a short time away.

And when in our lives we feel as if we are experiencing a season of winter,
reach out to us with the power of your resurrection
so that we may feel the warmth of your love
and see your light that alone can take away the darkness of our soul.

- Cal Wick

"Define yourself radically as one beloved by God.
This is the true self.
Every other identity is illusion."

Brennan Manning, Abba's Child: The Cry of the Heart for Intimate Belonging, 20th century